

## Flow - manifold block





### Characteristics

System	Manifold block
Nominal widths	DN 15..40
Media	Water Oils
Pressure resistance	Max. 25 bar
Temperature	-20..+110 °C

### Applications

- Flow recording, monitoring, and control in oil, lubrication, and cooling equipment

## Device overview

Device	System	Number of measurement points	Nominal width	Pressure resistance	Medium temperature	Page
<b>VB</b> 	Manifold block with integrated valve	1..8	DN 15..20	PN 25	-20..+110 °C	3
<b>VB2</b> 	Manifold block	8	DN 40	PN 16	-20..+110 °C	4

Errors and technical modifications reserved.

**Product Information**

**Sensors and Instrumentation**

**Manifold VB**

For NJ / NJV / VL



Photo - valve block VB-020GA3 flow indicator NJVK1-020WM020

**Characteristics**

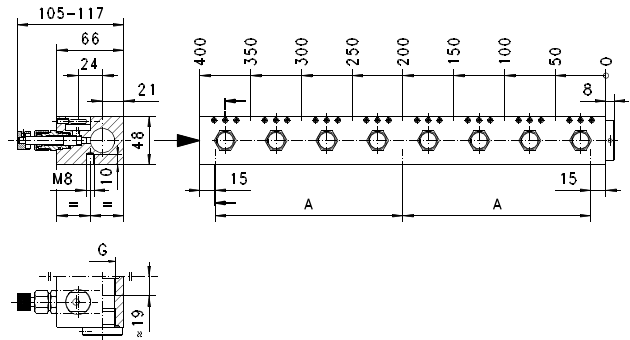
Manifold for single or multiple place systems and integrated needle valve for manual flow regulation.

**Technical data**

<b>Nominal width</b>	DN 15..20
<b>Process connection</b>	female thread G 3/4, optional G 1/2
<b>Number of measurement points</b>	1..8
<b>Pressure resistance</b>	PN 25
<b>Medium temperature</b>	-20..+110 °C
<b>Ambient temperature</b>	-20..+70 °C
<b>Materials medium-contact</b>	aluminium anodised, NBR, CW614N nickelled, CW614N
<b>Weight</b>	see table "Dimensions and weights"

**Dimensions and weights**

Number of measurement points	Types	Length (excluding stoppers)	Number of fixing holes	A	Weight kg
1	VB-020GA1	50	2	-	0.6
2	VB-020GA2	100	2	-	1.1
3	VB-020GA3	150	2	-	1.6
4	VB-020GA4	200	2	-	2.1
5	VB-020GA5	250	2	-	2.4
6	VB-020GA6	300	3	135	3.0
7	VB-020GA7	350	3	160	3.4
8	VB-020GA8	400	3	185	3.8



**Ordering code**

VB -  1.  2.  3.  4.  G

○=Option

<b>1. Nominal width</b>	
015	○ DN 15 - G 1/2
020	DN 20 - G 3/4
<b>2. Process connection</b>	
G	female thread
<b>3. Connection material</b>	
A	aluminium
K	○ stainless steel (1.4305)
M	○ brass (CW614N nickelled)
<b>4. Number of measurement points</b>	
1	1
2	2
3	3
4	4
5	5
6	6
7	7
8	8

**Product Information**

**Sensors and Instrumentation**

**Manifold VB2**

For HD / MR / NJ / NJV / VL

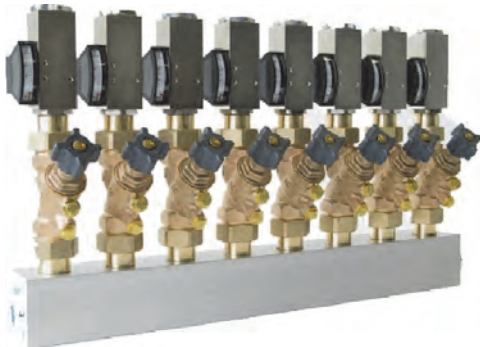
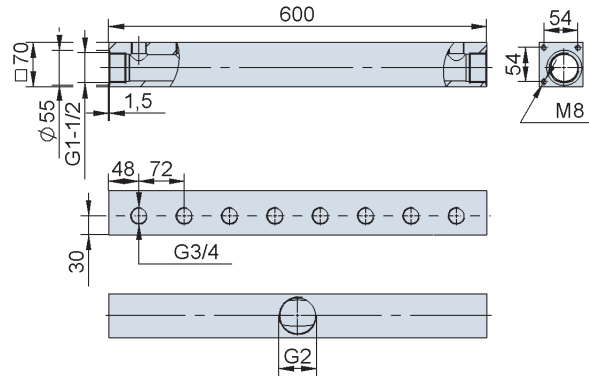


Photo - valve block VB2-020GA8 with valves and flow switch M101

**Dimensions**



**Characteristics**

Manifold for monitoring, display, and manual regulation in cooling water applications with up to eight measurement and control points.

**Technical data**

<b>Nominal width</b>	DN 20
<b>Process connection</b>	female thread G 3/4
<b>Number of measurement points</b>	8
<b>Pressure resistance</b>	PN 16
<b>Medium temperature</b>	-20..+110 °C
<b>Ambient temperature</b>	-20..+70 °C
<b>Materials medium-contact</b>	aluminium anodised, CW614N nickelled, NBR
<b>Weight</b>	5.2 kg

**Ordering code**

VB2 - 

1.	040
----	-----

2.	G
----	---

3.	A
----	---

4.	8
----	---

<b>1. Nominal width</b>	040	DN 40 - G 1 1/2
<b>2. Process connection</b>	G	female thread
<b>3. Connection material</b>	A	aluminium
<b>4. Number of measurement points</b>	8	8

**Optional**

- Valves
- 1..7 measurement points